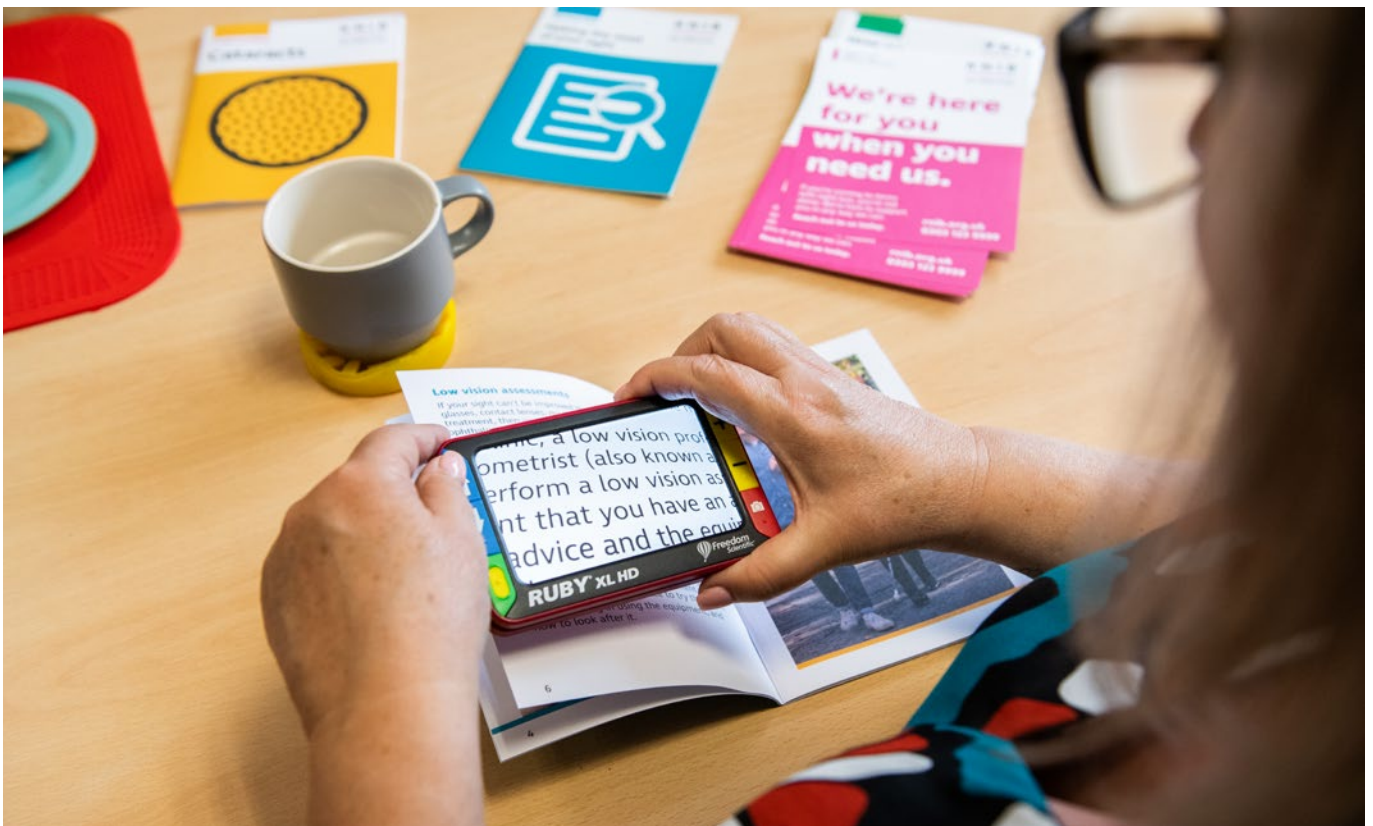


Training for health and social care professionals



RNIB specialist training courses for health and social care professionals who support people with sight loss, or complex/additional support needs



Contents

- 3 Introduction**
- 4 Why this training is essential**
- 5 Training for individuals and organisations**
- 6 Training for individuals and organisations (continued)**
 - Sight loss awareness;
 - Understanding sight loss and complex needs;
 - Understanding sight loss and learning disabilities;
 - Understanding sight loss and dementia;
 - Inclusive environments for people with sight loss
- 7 Training for organisations only**
 - Vision Friends - Older people;
 - Vision Champions - Learning disabilities
- 8 Bespoke training for organisations**
- 9 Open learning**
- 10 How to book**
- 11 References**

Introduction

This brochure gives you an introduction to our team and an overview of the courses we offer. Each training course provides valuable insight for anyone in health, or social care, services working with people who have sight loss or who have complex/ additional support needs.

We include a short description of each course, as well as information on our other resources and how to book bespoke training tailored to the needs of your own organisation. In addition, we offer a number of CPD-certified training courses (see page 5).



Why this training is essential

Around two million people in the UK are living with sight loss and this figure is set to double to more than four million by 2050 [1].

A high percentage of people supported by health and social care professionals have sight loss and, with numbers set to increase, training should be seen as an essential part of any staff induction or development. The older you are, the greater your risk of sight loss; 79 per cent of blind or partially sighted people are aged 65 or over [2].

Our training will help increase awareness and understanding of sight loss while ensuring staff have the tools and knowledge they need.

This enables staff to offer the best possible personalised care and support and will prepare teams to cope with the growing complexity of need for people they support.

Training is not only important for those supporting individuals with sight loss or older people but is vital for anyone supporting individuals with complex needs.

Adults with learning disabilities are 10 times more likely to experience sight loss than the general population [4]. In addition, there are at least a quarter of a million people living with both sight loss and dementia in the UK [3].



Training for individuals and organisations

The following training courses are available to all professionals working in the health and social care sector.

CPD certified hour and half-day sessions are available for each of the topics. Full learning objectives for each session are available upon request.

For individuals, please sign up to an online session using the following link: www.eventbrite.com/cc/cpd-training-courses-3366329, or contact the team for further information.

For organisations, please see the booking information on page 10. Full-day sessions with in-house practical experiential learning activities and/or sighted guide support training are also available. Please enquire to confirm CPD status if required.



Our training courses are certified by CPD UK. For further information please visit www.cpduk.co.uk and search for RNIB.



Training for individuals and organisations (continued)

- **Sight loss awareness**

Learn about the main causes of sight loss, the impact it can have and strategies to improve support and promote independence for blind and partially sighted individuals.

- **Understanding sight loss and complex needs**

Understand the importance of considering sight loss when supporting individuals with complex needs, including learning disabilities, dementia, stroke survivors and autism. This course covers the impact and signs of sight loss as well as ways to adapt your practice.

- **Understanding sight loss and learning disabilities**

Gain increased understanding of the causes and impact of sight loss for individuals living with learning disabilities, including the impact on behaviour and the importance of accessing eye care.

- **Understanding sight loss and dementia**

Gain increased understanding of the causes and impact of sight loss for individuals living with dementia, including the visual difficulties related to dementia and strategies to support communication.



- **Inclusive environments for people with sight loss**

Learn about reasonable adjustments and how they can reduce the impact of sight loss by creating inclusive environments that enhance freedom of movement and reduce the risk of falls for people living with sight loss.

We used the RNIB to deliver training for optometrists around the area of dementia and sight loss. The training events were interesting, engaging and informative. The feedback we received after the events was overwhelmingly positive. I would not hesitate to work with RNIB again.

Gordon Elliott, Optometrist,
Cheshire and Merseyside

Training for organisations only

The following training courses are only available to organisations and have fixed session lengths.

- **Vision Friends: Older people**
Full day session

Gain the skills and understanding to confidently support older adults living with sight loss, enhancing their independence and quality of life. This includes access to the Vision Friends toolkit and an additional training resource library available on our online platform.

- **Vision Champions:**
Learning disabilities
Full day session

Course requirement: Attendees must have completed the 'Understanding sight loss and learning disabilities' course prior to this session.

This session supports staff to confidently use the Vision Champions toolkit. The toolkit is designed to equip staff with the knowledge and resources to confidently recognise and record the signs of sight loss and support adults with learning disabilities through the eye care journey. The toolkit includes natural observation cards, referral forms, pre-optometrist forms and a vision passport.



The course content has helped staff understand the impact of sight loss and take a more proactive response to promoting and raising awareness of good eye health.

Allison O'Donnell, Practice Development Nurse Specialist, Learning Disability Services, Greater Glasgow and Clyde

Bespoke training for organisations



We can design and deliver bespoke training to your organisation, to meet your team's needs or, an individual service user's requirement. As well as tailoring content for the session, we can offer vision and autism or vision and stroke related training. Please contact the team to discuss learning needs and bespoke training options.

Contact us and we can help.

Email to:

HSCtrainingteam@rnib.org.uk

or telephone:

0141 739 3683.

Open learning

eLearning

RNIB's Learning Choices digital platform offers a wide range of courses, with topics including learning disability, dementia, assistive technology and low vision.

Our eLearning courses take an interactive multimedia approach with quizzes, case studies and content informed by lived experience. All our digital learning is designed to be accessible to screen reader users and all video/audio content has a text transcript.

Courses accredited by the General Optical Council (GOC):

- **Sight loss awareness**
Provides an overview including eye conditions, communication, support services and technology.
- **A holistic approach to low vision**
An in-depth view of low vision assessment, strategies, support, technology, and low vision aids.

Please contact
LearningChoices@rnib.org.uk
for a list of our latest courses.



Free online resources

We provide a range of free online resources to support your self-directed learning. There are top tip cards, good practice guides, podcasts and booklets relating to sight loss and older people, learning disabilities and complex needs. You can find these on **Health and Social care professionals | RNIB**.

Open Badges

Open badges are digital certificates which are quick and easy to earn. You can use these to formalise what you have learned from our resources. You can find them here: Open Badges **www.badges.sssc.uk.com/view-all-badges/**. Filter by issuer and select RNIB.

How to book

For individuals, please sign up to an online session using the following link: **www.eventbrite.com/cc/cpd-trainingcourses-3366329**, or contact the team for further information.

Email: **HSCtrainingteam@rnib.org.uk**

Telephone: **0141 739 3683**

If you are an eye care professional and want to find out about our GOC CPD accredited courses, please email **eyecare.professionals@rnib.org.uk**.

Booking information for organisations

For course bookings or enquiries for organisations, please contact us.

Delivery format

- Hour sessions are available online only.

- Half-day sessions are available online or can be delivered face-to-face, in-house to your organisation.
- Full-day sessions are available for face-to-face delivery only.

Attendance numbers

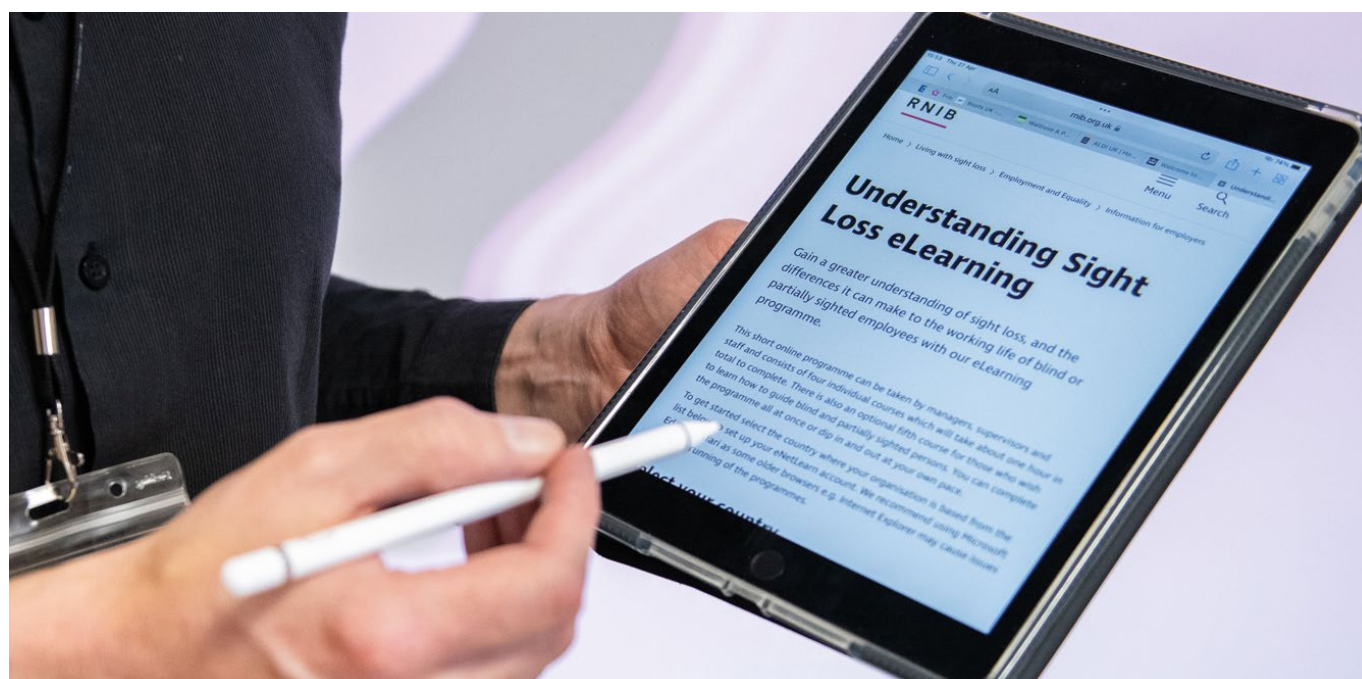
Face-to-face sessions can accommodate up to 16 attendees. Online sessions have no limit, but a maximum of 20 attendees is recommended.

Costs

1-hour sessions cost **£200**

Half day sessions cost **£500**

Full day sessions cost **£960**



References

1. Pezzullo L, Streatfield J, Simkiss P, and Shickle D (2018) The economic impact of sight loss and blindness in the UK adult population. BMC Health Services Research, 18:63; Deloitte Access Economics (2019) The economic impact of sight loss and blindness in the UK adult population <https://bmchealthservres.biomedcentral.com/articles/10.1186/s12913-018-2836-0> (accessed 6/3/2023)
2. Office for National Statistics (2015). "National Population Projections: 2014-based Statistical Bulletin". London: Office for National Statistics <https://www.gov.uk/government/statistics/national-population-projections-2014-based-projections> (accessed 6/3/23)
3. Bowen M, Edgar DF, Hancock B, et al. The Prevalence of Visual Impairment in People with Dementia (the PrOVIDe study): a cross-sectional study of people aged 60–89 years with dementia and qualitative exploration of individual, carer and professional perspectives. Southampton (UK): NIHR Journals Library; 2016 Jul. (Health Services and Delivery Research, No. 4.21) <https://www.ncbi.nlm.nih.gov/books/NBK374261/> (accessed 6/3/23)
4. Emerson, E., & Robertson, J. (2011). "Estimated prevalence of visual impairment among people with learning disabilities in the UK". London: Royal National Institute for the Blind & Seeability Learning Disabilities Observatory https://media.rnib.org.uk/documents/Estimated_prevalence_of_VI_among_people_with_LD_in_UK_-_Research_report.pdf (accessed 6/3/23)